

CERTIFIED LAND CORNER RECORDATION

DESCRIPTION OF CORNER EVIDENCE FOUND, AND ORIGINAL RECORD (If known)

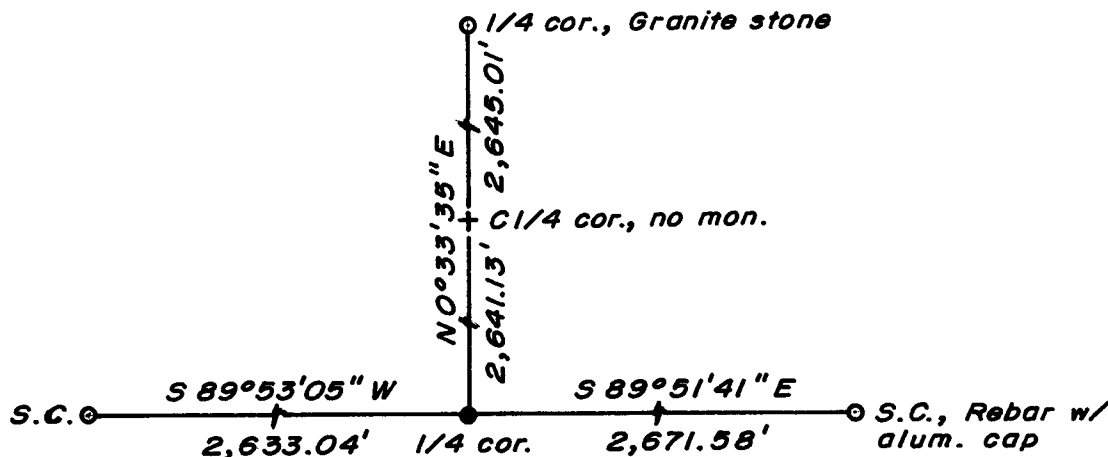
LOCATION No evidence of corner monument found. Corner position re-established at depression found in otherwise undisturbed prairie surface, near position shown on Wyoming Highway Department plans (Project No. I-25-1-(34)17 and SCP 6181).
 ¼ S.26
 ¼ S.35
 T.16N., R.67W.
 6th P.M. G.L.O. record - Unknown.

DESCRIPTION OF MONUMENT AND ACCESSORIES ESTABLISHED TO PERPETUATE THE ORIGINAL LOCATION OF THIS CORNER:

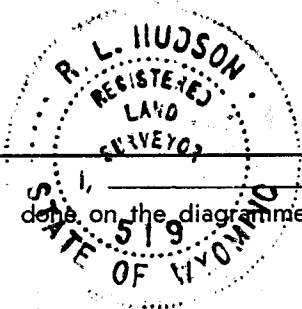
At the corner: Set a 1½" dia. x 30" long (concrete-filled) iron pipe with brass cap.
 Accessories: Set a 2" x 2" x 2' Pine post, painted red over white; 1.5' NE'ly of corner monument.

SKETCH, WITH COURSE AND DISTANCE TO ADJACENT CORNER IF DETERMINED IN THIS SURVEY.
 (May Sketch or Paste Reproduction on Reverse Side.)

Basis of Bearing - By solar observation, 1½ miles east.
 Distances based on measurements by electronic means.



No scale
 Brass cap set 6" above surface.
 Brass cap stamped:
 T.16N. R.67W.
 ¼ S.26
 ¼ S.35
 LS 519 1978



R. L. Hudson certify that I have carefully performed ~~or reviewed~~ the work done on the diagrammed corner as reported on this recordation form and approve the same.

R. L. Hudson Wyoming L.S. No. 519
 Signature of Surveyor Registration No.

STATE OF WYOMING,
 Office of Clerk and Recorder,
 County of Laramie

511163

This "corner record" was filed for record on the 21 day of December, 1978, was noted on the cross-index plat and is assigned page No. _____, in book No. _____.

Janet C Whitehead
 County Official

Cross Index No.	T. _____	R. _____	Mer.
	<u>V-19</u>	<u>16</u>	<u>67</u>
	T. _____	R. _____	Mer.
	T. _____	R. _____	Mer.
	T. _____	R. _____	Mer.
	T. _____	R. _____	Mer.
	T. _____	R. _____	Mer.